



HAWK SHELTER



## PRODUCT CATALOG

Tek Metal Security Systems Industry and Trade Ltd. Co.

Maltepe Mahallesi, Eski  ırpıcı Yolu Sokak No:8 Kat:14

Parima Plaza. Zeytinburnu / İstanbul

Telephone : +90 212 939 85 05

WhatsApp : +90 554 565 77 95

[info@hawkshelter.com](mailto:info@hawkshelter.com) | [www.hawkshelter.com](http://www.hawkshelter.com)



**HAWK SHELTER**



## ABOUT US

*As **Tek Metal Security Systems**, we have been doing the facade engineering works of qualified steel, steel structures and multi-storey buildings for years. Our 20 years of experience in the metallurgy and construction industry now conduct modular shelter cabins with the **HAWK SHELTER** brand. We also manufacture mine escape rooms, special safe compartments and panic rooms for civilian use.*

*Based on the fact that the need for security is not a luxury consumption and everyone needs access to this service, the shelter cabins we produce can be installed wherever you want on your land or can be integrated into existing buildings. Whether it's a safe and private space for you and your family in difficult times, or a secluded and highly secure space where you can store your private files or valuables in your home.*

***There are always dangers. Take action while there is still time.***

## WHAT DO WE PRODUCE?

*We have been producing premium steel constructions and developing steel facade and wall systems since 2008. Our products turn into safe structures that protect people and all their values in many parts of the world.*

*Now, with our **HAWK SHELTER** brand, we transform our steel construction and custom fabrication facade experience into solutions for underground bunkers, hidden safe rooms, high-end bunker systems with NBC filtration system and panic rooms. We design, manufacture and build a special shelter for you with all the infrastructure that will protect you, your loved ones and assets under all circumstances.*

*Our shelters are designed to ensure that you stay alive and safe with minimum facilities against unforeseen threats. Our experts analyze all risks and build robust and isolated environments that can fully meet your long-term shelter, security and storage needs in extreme conditions where access to energy, shelter and food is difficult or even impossible.*

*We design, produce and ship internationally.*

*As **HAWK SHELTER**, we manufacture shelter cabins in three main models and in six different sizes. We also do special shelter projects designed according to the terrain and customer needs.*





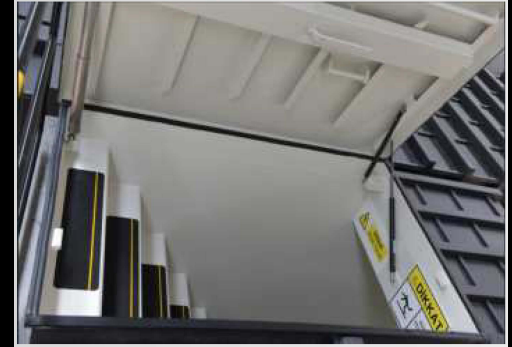
### *PRODUCTION*

*In the system, which allows production in the factory environment without being affected by climatic conditions, the product is ready to be shipped after testing and ensuring its protection quality.*



### *DELIVERY AND INSTALLATION*

*By using connection flanges, shelters of the desired size can be created and they can be shipped and assembled in a short time so that smoke elements cannot locate them.*



### *PROTECTION and SEALING*

*Since it is a structure that must be buried underground to reduce the effects of pressure and radiation, it is important to protect the steel against corrosion.*

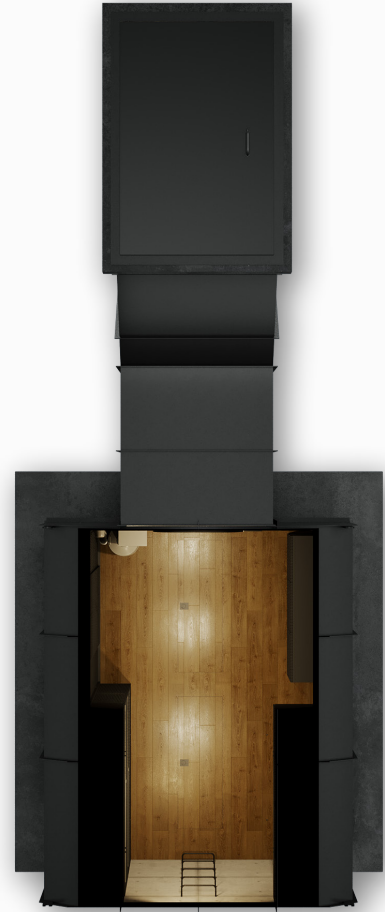
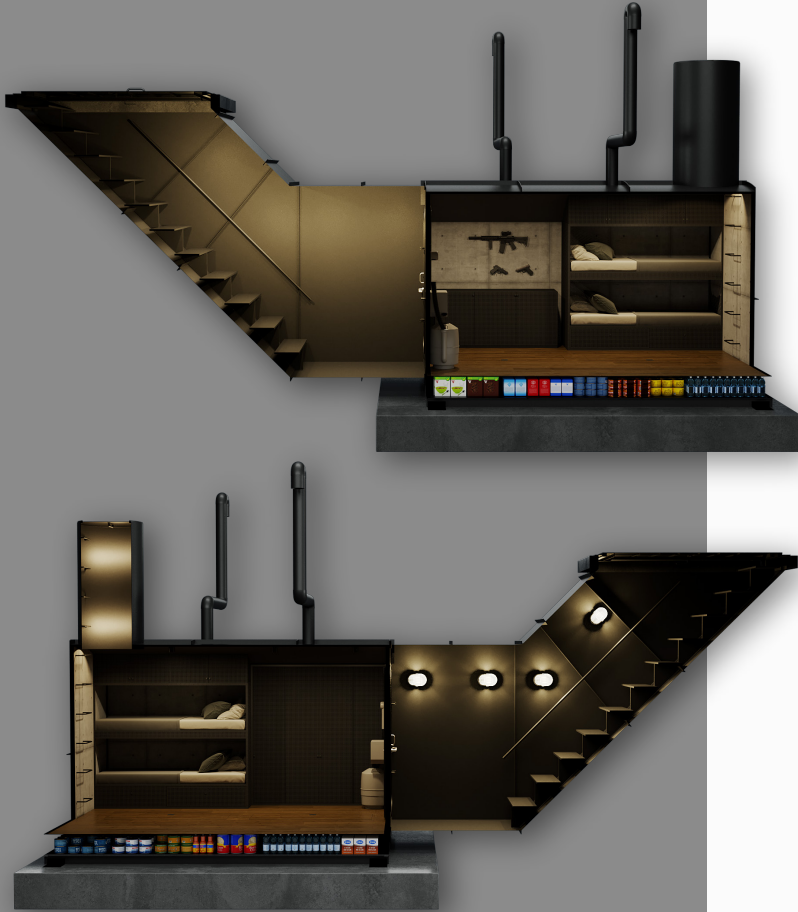
### *SHELTER ENTRANCE AND EXIT*

*Shelter doors are positioned parallel to the soil surface. Bulletproof and 100% leak-proof at high security FB6 level according to EN 1522. It is resistant to pressure and can be opened with average human strength.*



HAWK SHELTER

# ECO SHELTER



## Technical Details

- Ventilation system
- 220V input
- 12 Volt LED interior lighting
- Double bunk bed
- Wall and ceiling covering
- Floor covering
- 50+ Year durable exterior

### ECO SHELTER

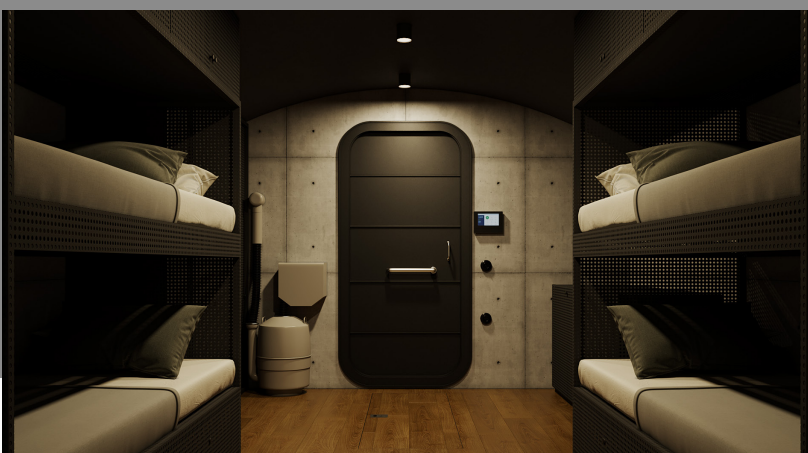


Width/meters 2,20  
Length/meters 3,50  
Height/meters 2,50

### ECO SHELTER



Width/meters 2,90  
Length/meters 4,50  
Height/meters 2,50





HAWK SHELTER

# MINI SHELTER



## Technical Details

- CBRN filter system*
- Double bunk bed*
- Dress cabinet*
- Kitchen countertops*
- Alcohol stove*
- Kitchen sink*
- Kitchen cabinets*
- Toilet/WC*
- Sink*
- Bath*
- Clean water port*
- Water filtration/Waste water pumping system*
- 12VoltTV/HDMI/USB*
- Wall and ceiling covering*
- Floor covering*
- 12 Volt LED interior lighting*
- Energy storage batteries*
- 220V input*
- 50+ Year durable exterior*

### MINI SHELTER **S**

Width/meters **2,30**  
 Length/meters **5,60**  
 Height/meters **2,50**

### MINI SHELTER **L**

Width/meters **3,20**  
 Length/meters **6,50**  
 Height/meters **2,50**





HAWK SHELTER

# FAMILY SHELTER



## Technical Details

- CBRN filter system
- 2 single bunk beds
- Parents bedroom
- Dress cabinet
- Kitchen countertops
- Alcohol stove
- Kitchen sink
- Kitchen cabinets
- Dining table / Chairs
- 2 Seater Sofa
- Toilet/WC
- Sink
- Bath
- Clean water port
- Water filtration/Waste water pumping system
- 12VoltTV/HDMI/USB
- Wall and ceiling covering
- Floor covering
- 12 Volt LED interior lighting
- Energy storage batteries
- 220V input
- 50+ Year durable outer coating

### FAMILY SHELTER



Width/meters 2,30  
 Length/meters 9,50  
 Height/meters 2,50

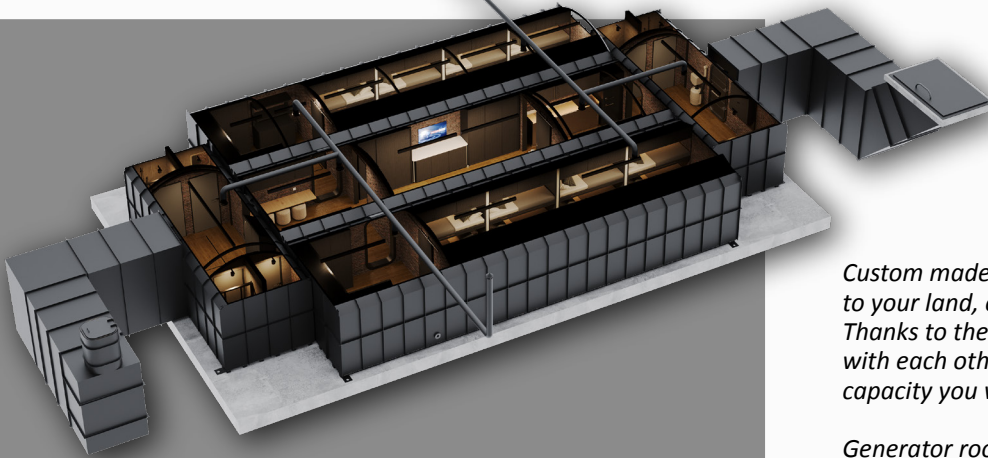
### FAMILY SHELTER



Width/meters 3,20  
 Length/meters 11,60  
 Height/meters 2,50



# CUSTOM MADE SHELTERS



*Custom made shelters are shelters produced according to your land, equipment and size demands. Thanks to the modules that can be integrated with each other, they are produced in the area and capacity you want.*

*Generator room, sports room, activity room or sections with any equipment you want.*



# INTEGRATABLE PARTS



**FILTER FAMILY**



**CONTROL UNIT FAMILY**



**AUXILIARY PRODUCTS**

*In addition to standard-equipped shelters, we also manufacture shelters with extreme threats, conventional warfare, chemical, biological or radioactive fallout detection and filter systems.*

*Our aim is to provide a safe space for you and your loved ones to get over the first shock in the face of such a threat, and shelter until the conditions are relatively stable.*



HAWK SHELTER

# PRICING



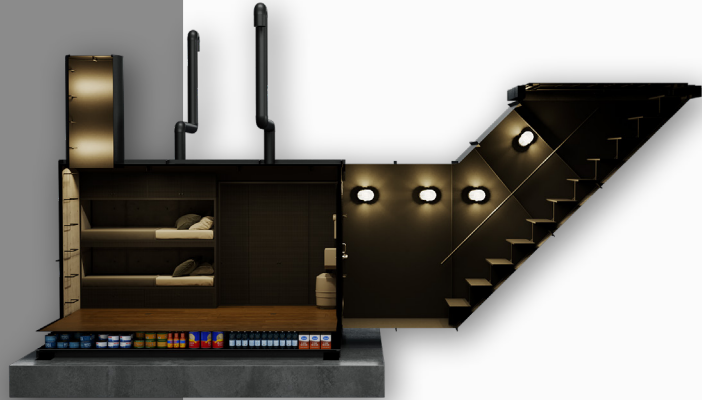
*Our prices for our standard models dated 20 May 2023 are as follows.*

**ECO SHELTER**  
29.900 \$

**S**

**ECO SHELTER**  
39.900 \$

**L**



**MINI SHELTER**  
55.000 \$

**S**

**MINI SHELTER**  
64.000 \$

**L**



**FAMILY SHELTER**  
110.000 \$

**S**

**FAMILY SHELTER**  
125.000 \$

**L**



*Prices include standard equipment and interior design.  
Shipping and installation are not included.*

